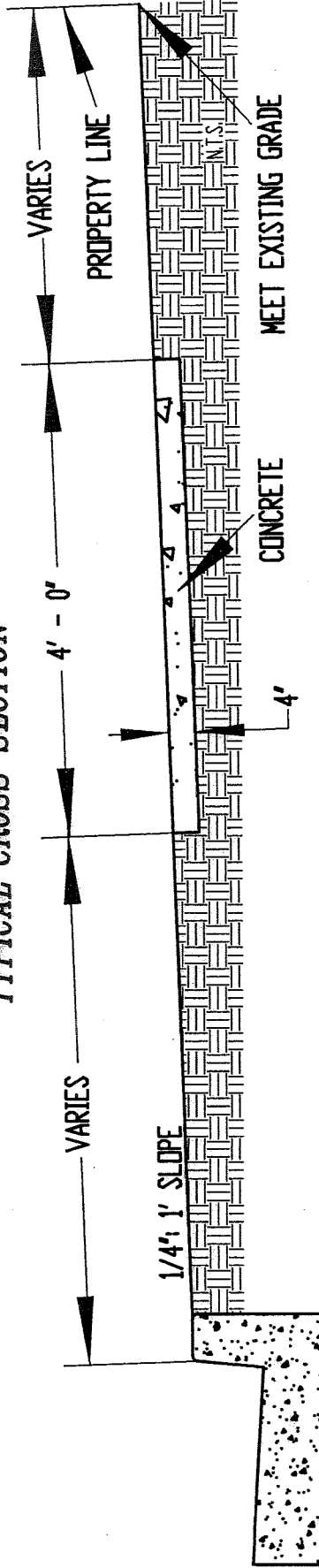


DETAIL OF CONCRETE SIDEWALK TYPICAL CROSS SECTION



NOTE

- (1) SUBGRADE SHALL BE WELL DRAINED AND COMPACTED TO A FIRM SURFACE WITH A UNIFORM BEARING LOAD.
- (2) WHERE SIDEWALK IS TO BE BUILT NEXT TO AN ADJACENT UNPAVED STREET, FINISHED GRADES MUST BE OBTAINED FROM THE CITY ENGINEER.
- (3) ALL FORMS FOR SIDEWALK CONSTRUCTION SHALL BE APPROVED BY THE CITY ENGINEER.
- (4) CONCRETE SHALL BE AIR ENTRAINED 4,000 P.S.I. STRENGTH ACCORDING TO THE REQUIREMENTS OF THE STANDARD SPECIFICATIONS OF THE NEW JERSEY DEPARTMENT OF TRANSPORTATION FOR 2001 AND SUPPLEMENTARY SPECIFICATIONS.
- (5) THE SIDEWALK SHALL BE FOUR (4) INCHES THICK AND SHALL BE FINISHED WITH A WOOD FLOAT FOLLOWED BY BRUSHING WITH A WET SOFT HAIR BRUSH. (6" THICK AT DRIVEWAYS.)
- (6) A FULL DEPTH TRANSVERSE EXPANSION JOINT IS TO BE CUT EVERY 12 LINEAR FEET. JOINTS SHALL BE FILLED WITH PREFORMED EXPANSION JOINT FILLER, 1/2 INCH THICK, WHICH SHALL BE FLUSH WITH THE TOP. A FALSE TRANSVERSE JOINT IS TO BE CUT EVERY 4 LINEAR FEET.
- (7) WHERE SIDEWALK ADJOINS A CURB OR OTHER STRUCTURE, A 1/2" PREFORMED JOINT FILLER SHALL BE INSTALLED.
- (8) CONCRETE SIDEWALK TO BE CURED AS PER NEW JERSEY STATE D.O.T. STANDARD SPECIFICATIONS 2001 SECTION 501.17 PAGE 500-28

REV.	DATE	DESCRIPTION

DRAWN BY: D.W.C.
 SUBMITTED BY: George R. Vucich
 PRINCIPAL ENGINEER

CITY OF LINDEN, N.J.
ENGINEERING DEPARTMENT
JOHN A. ZIEMIAN - CITY ENGINEER

[Signature]
 APPROVED BY THE CITY ENGINEER